



# GAT MONTHLY MEMBERSHIP PROGRESS REPORT

Results as of: 3/31/2024

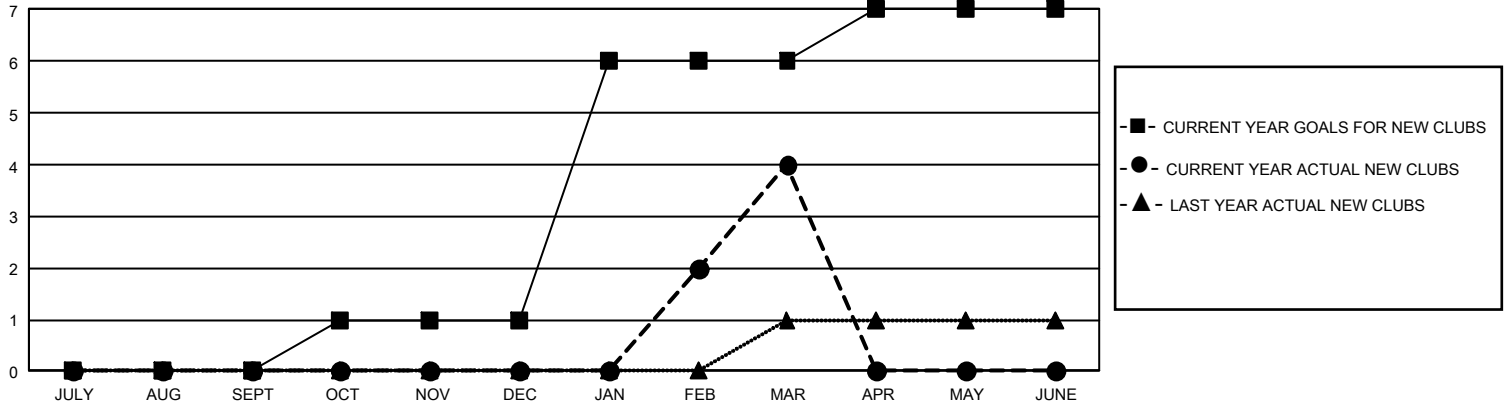
## GMT Constitutional Area 5 - J, Group H

REPORT DOES NOT INCLUDE CLUBS IN UNDISTRICTED AREAS.

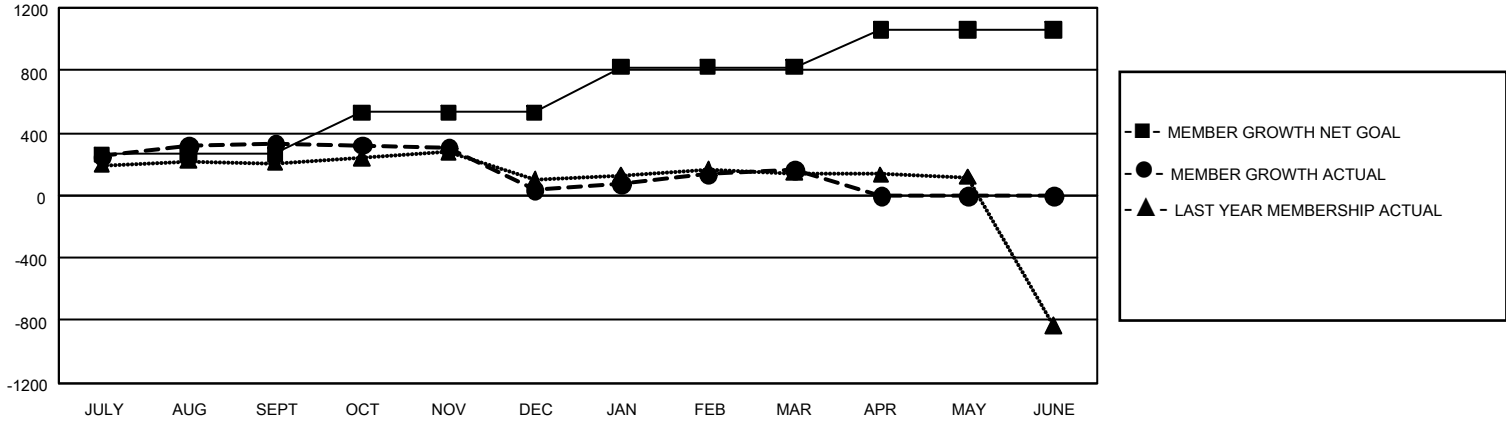
Clubs			
RESULTS FOR 2023-2024			
QUARTER	NEW CLUB GOAL	NEW CLUBS	DROPPED CLUBS
JULY/AUG/SEPT	0	0	0
OCT/NOV/DEC	3	0	0
JAN/FEB/MAR	15	4	0
APR/MAY/JUNE	3	0	0

Members			
RESULTS FOR 2023-2024			
QUARTER	MEMBER GROWTH NET GOAL	MEMBER GROWTH ACTUAL	DROPPED MEMBERS ACTUAL (including transfers)
JULY/AUG/SEPT	262	543	189
OCT/NOV/DEC	270	202	485
JAN/FEB/MAR	290	387	251
APR/MAY/JUNE	238	0	0

GOALS AND ACTUAL NEW CLUBS CUMULATIVE



GOALS AND ACTUAL MEMBERS CUMULATIVE



DROPPED CLUBS: 0	292 CLUBS OF 389 ADDED 1 OR MORE NEW MEMBERS	<b>GENDER DISTRIBUTION</b>
<b>DROPPED MEMBERS</b>	<a href="#">CLICK HERE FOR CUMULATIVE MEMBERSHIP DATA</a>	MALE 13,530 (74.43%)
DECEASED 107		FEMALE 4,648 (25.57%)
CLUB CANCELLED 0		NON BINARY 0 (0.00%)
OTHER 818		PREFER NOT TO ANSWER 0 (0.00%)
<b>TOTAL 925</b>		TOTAL FAMILY UNIT MEMBERS 7,699
		FAMILY MEMBERS PAYING HALF DUES 4,200